



HEAR THE CALL.



EXPLORE THE PLAN.




the call.

Where is God calling you? In the Florida District of the Wesleyan Church, we're building a team where everyone can fulfill their Spirit-empowered potential. We have churches around the state of Florida that are striving to make an eternal impact through the transformation of lives of men and women who call Florida their home. We invite you to explore, dream, and envision the possibilities as you learn more about what God may be calling you to do in Florida!



the mission.

The Florida District of the Wesleyan Church exists to partner with local churches to reproduce disciples, servant leaders, and churches throughout the Florida District and beyond.



the plan.

We will focus on multiplication as a district team. Our plan includes:

1. Developing Leaders (lay and ministerial) – We will train and develop our lay leaders while they explore God's potential calling on their life through our Lay Academies located throughout the state. We will also train second career ministerial students through our Ministerial Institute located in the District Office and young people through Wesleyan universities and colleges.

2. New Churches – We will be actively engaged in the planting of new churches with the Missional DNA to reproduce new congregations.

3. Overseas Partnerships – We will invest in creative partnerships outside of our district with a goal of forming two overseas partnerships for the purpose of planting new churches globally.

4. Church Renewal – We will chart trends as we assess and invest in churches with the potential to further strengthen our District Team.

5. Multi-ethnic Opportunities – We will focus on planting new Hispanic and Caribbean congregations as we expect 50%+ of our growth among these people groups.





the district.

The Florida District offices are centrally located in Wesley Chapel (north of Tampa) within minutes of I-75. The address is 3807 Maryweather Ln | Wesley Chapel, FL 33544, phone: 813-907-5511, fax: 813-907-5522  
website: [www.floridawesleyan.com](http://www.floridawesleyan.com), email: [do@floridawesleyan.com](mailto:do@floridawesleyan.com).



the fit.

Do you have what it takes to be a part of the Florida District Team as we work together to accomplish great things for Jesus Christ and his kingdom?

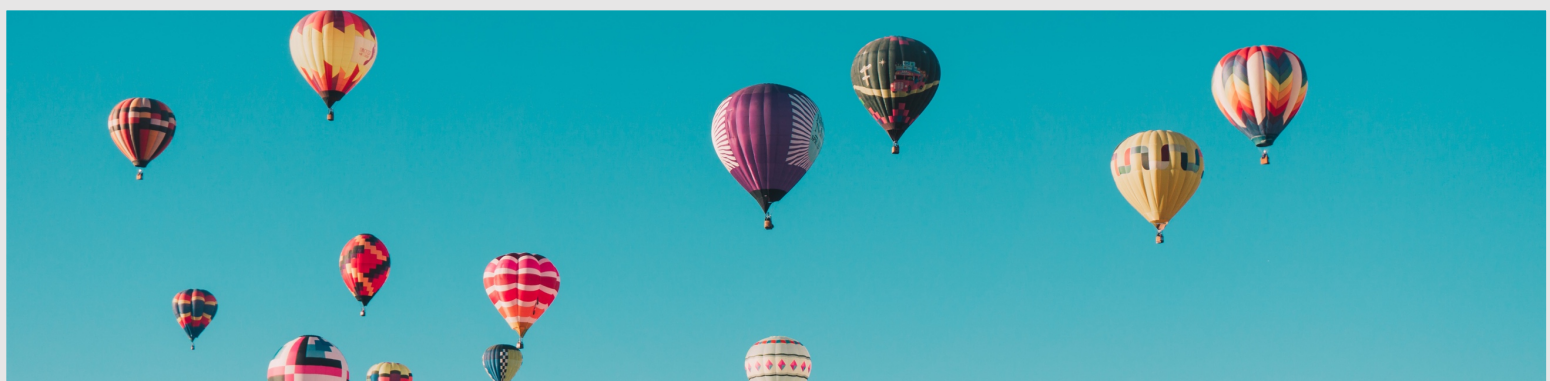
Do you have a heart that beats with a strong passion to reproduce disciples, servant leaders, and churches in our district and beyond?

Do you value accountability that pushes you further in your walk with Christ and strengthens your character and integrity?

Do you have a can-do attitude that is committed to staying the course while overcoming obstacles and facing challenges head-on?

Do you have a calling and vision from God to do a great work for Him in a district which is striving to reach its full potential in Christ?

We will be praying for God's leading in your life as we go through the process with you of determining where you might have the most impact for the kingdom of Jesus Christ!



## **Climate**

Florida's unique sub-tropical climate brings us only two seasons a year. A wet season (typically spring and summer) with statewide average high temperatures in the 90s, and a dry season (typically fall and winter) with statewide average high temperatures in the upper 60s to mid 80s.

## **Fun in the Sun Shine State**

Florida is one of the best places to relax, have fun, and enjoy life on the entire planet. With the warm climate and one of the largest coast lines in the country, our beaches attract guests from all around the world. Many theme parks and resorts also call Florida home, including Walt Disney World Resort, which with its four amusement parks is the largest vacation resort in the world. We are also home to Universal Studios, Busch Gardens, and Sea World. Why not enjoy the best vacation possible, right in your own back yard?

## **Cities and Countryside**

Florida offers some of the best of both worlds with cities and rural communities. Miami-Ft. Lauderdale is the 7th largest metropolitan community in the United States, with other large metropolitan communities spread across the state including Jacksonville, Tampa, and Orlando. We also have many small rural communities with farmland, strawberry fields, and the famous Florida orange groves. Whether you like big city living, or small town communities, we've got it.

## **Population**

Already the third most populous state at 22 million, Florida is one of the fastest growing states in the country. By some estimates the population in Florida grows by nearly 1,000 people per day.

## **Demographics**

This is a very racially diverse state. We have a heavy Hispanic influence (23.6% of the total population) which continues to grow at a rapid rate. A mixture of many other cultures and ethnicities exists as well, especially in our more urban areas. In the state of Florida, over 25% of the population speaks a language other than English at home.